

London Overground

Up and running

Quicker. The new London Overground now open



MAYOR
OF LONDON

Transport for London



New line opens on schedule

For the last three years London Overground has been working hard to build the new line. It now runs from Dalston Junction in the north through to New Cross, Crystal Palace and West Croydon in the south.

This important link between north and south London means that many passengers stand to benefit from faster and cheaper journeys. The many key interchanges on the line are helping passengers to make their connections more easily and, with Shoreditch High Street station just a five-minute walk from Liverpool Street, it's a great way to access the heart of the City.

We believe that if a job's worth doing, it's worth doing well. So as part of the extension project we have refurbished many of our existing stations and built four stunning new ones at Dalston Junction, Haggerston, Hoxton and Shoreditch High Street, all of which now feature on the Tube map.

The extended line is also breathing new life into communities from New Cross Gate to Crystal Palace and West Croydon, with all nine stations also now added to the Tube map for the first time.



A quicker, more frequent service

The opening hours for the new London Overground route closely mirror those of the Tube. From Monday to Saturday, trains run on the line from 05.40 to 23.40; and on Sundays they run from 07.00 to 23.40.

The new London Overground route operates a turn-up-and-go service, with trains running no less than every 15 minutes at the extremities of each branch.

Trains run every five minutes between Dalston Junction and Surrey Quays, after which they branch off to New Cross, Crystal Palace and West Croydon. So trains also run every seven to eight minutes between Surrey Quays and Sydenham.

Many passengers find that the new extended line is considerably reducing their journey time. To keep our passengers in the loop, we are also making improvements to our real-time information online, in trains and at stations.

Full details of train times on the new London Overground can be found in our timetable leaflet, available from local stations or online at tfl.gov.uk



Cheaper, safer and better all round

Oyster pay as you go is valid at all London Overground stations, enabling passengers to save time and money.

Many journeys will be cheaper because the new London Overground line allows passengers to access many places to the east of London without entering zone 1, which previously wasn't possible – for example, West Croydon to Canary Wharf. Also Freedom passes can be used on all London Overground services.

Passenger security is important to us, so all London Overground stations between Dalston Junction and West Croydon are staffed during the hours of service and have good CCTV, lighting and safety arrangements in place. Our new fleet of trains has also been designed with passenger security and comfort in mind.

We're confident that by providing a quicker, cheaper transport link between north and south London, the new extended line will help regenerate the local economies along its route and revitalise local communities.



We're nearly there...

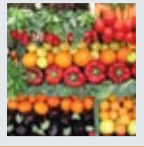
As you can see from the map overleaf, much of the work on the new line is now complete.

The next two stages of the project will make our service even better and extend it even further:

- the Dalston Junction to Highbury & Islington extension is scheduled for completion in 2011
- the final section of the orbital network (Surrey Quays to Clapham Junction) will open in 2012.



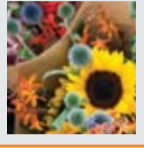
London Overground – gateway to a wealth of work, leisure and entertainment opportunities



Dalston Junction
Ridley Road Market – a culturally diverse street market that’s a real slice of east London (closed Sundays).



Haggerston
Geffrye Museum – a series of period rooms showing the changing style of the English domestic interior from 1600.



Hoxton
Columbia Road Flower Market – a colourful and sweet-smelling market full of horticultural delights.



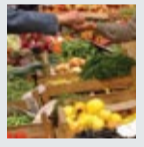
Whitechapel
Whitechapel Art Gallery – internationally acclaimed for its exhibitions of modern and contemporary art.



Wapping
Wapping Old Stairs – popular with archaeologists keen to see what’s been washed up on the Thames foreshore.



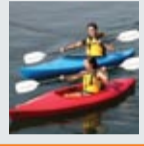
Canada Water
Stave Hill – an ecological park offering great views of the Isle of Dogs and the skyscrapers of Canary Wharf.



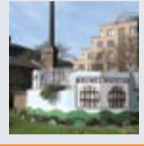
New Cross/New Cross Gate
Telegraph Hill – beautiful parks with tennis courts, a farmers’ market and a wonderful kids’ playground.



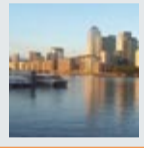
Shoreditch High Street
Brick Lane Market – a chaotic, bustling market selling everything from saris to second-hand furniture.



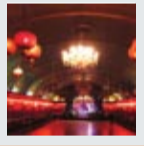
Shadwell
Shadwell Basin Outdoor Activity Centre – equipment and instruction for people of all ages and backgrounds.



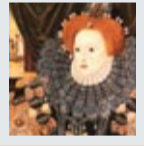
Rotherhithe
Brunel Museum – located on the site of Brunel’s Thames Tunnel, described in 1843 as the ‘eighth wonder of the world’.



Surrey Quays
Greenland Dock – the oldest of London’s riverside wet docks, it is now used purely for recreational purposes.



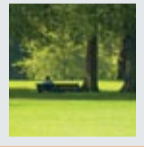
Brockley
Rivoli Ballroom – an original 1930s ballroom (Grade II) with a sprung floor and a stunning art deco interior.



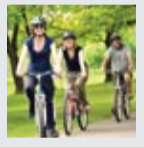
Honor Oak Park
One Tree Hill – where Elizabeth I picnicked with Sir Richard Bulkeley of Beaumaris on May Day in 1602.



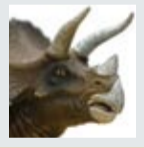
Forest Hill
Horniman Museum and Gardens – a free, family-friendly museum and 16 acres of award-winning gardens.



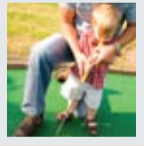
Sydenham
Mayow Park – has a refurbished playground and room to walk or relax in the peaceful, tree-lined surroundings.



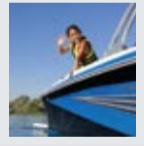
Crystal Palace
Crystal Palace Park – an historic, 200-acre park with a concert bowl and the National Sports Centre.



Penge West
Crystal Palace Park (Penge entrance) – a collection of dinosaurs, boating lakes, a café and a visitors centre.



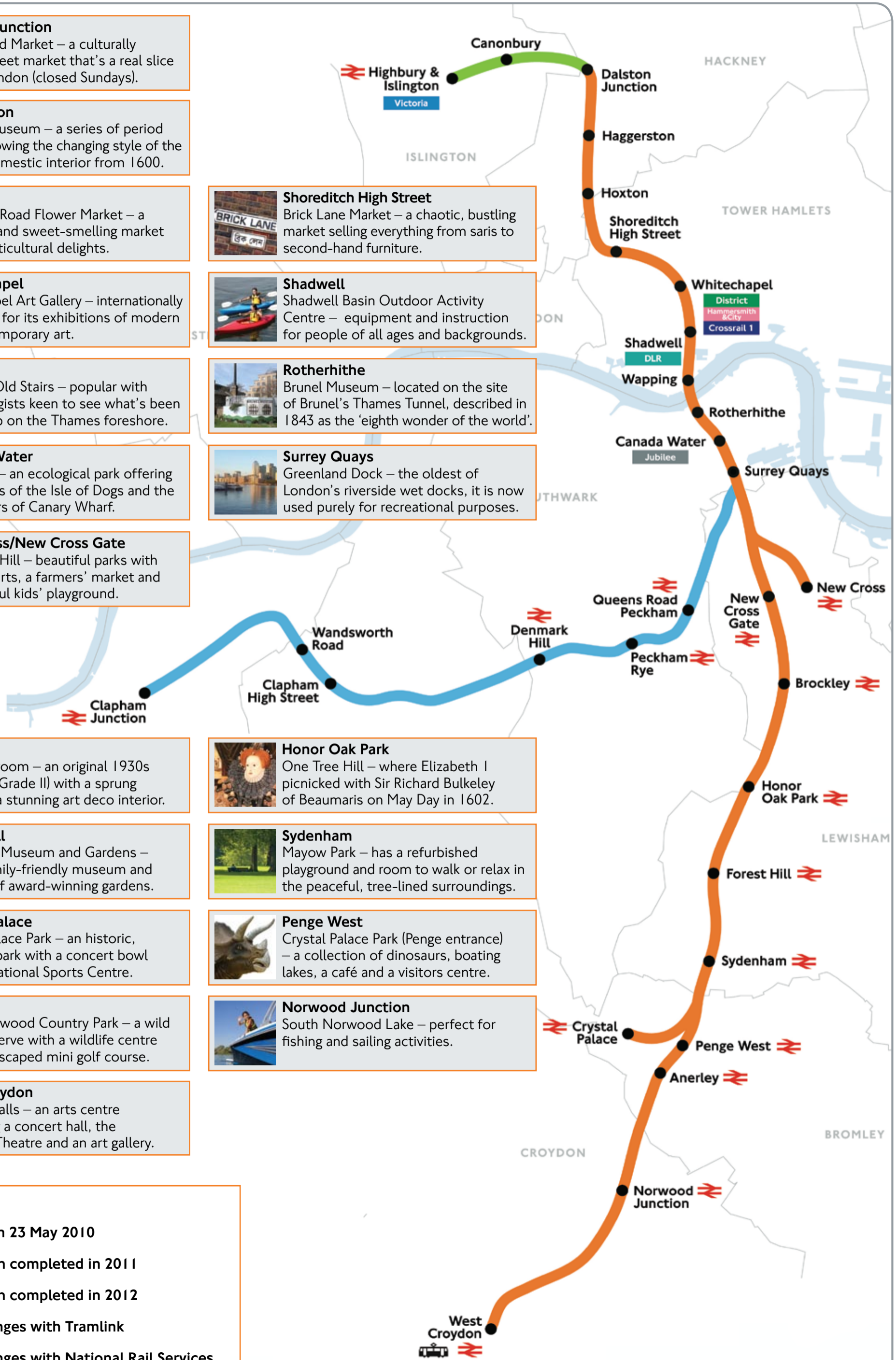
Anerley
South Norwood Country Park – a wild nature reserve with a wildlife centre and a landscaped mini golf course.



Norwood Junction
South Norwood Lake – perfect for fishing and sailing activities.



West Croydon
Fairfield Halls – an arts centre containing a concert hall, the Ashcroft Theatre and an art gallery.



Key

- Line open 23 May 2010
- Extension completed in 2011
- Extension completed in 2012
- Interchanges with Tramlink
- Interchanges with National Rail Services

We welcome your feedback

Customer feedback is very important to us. It gives us a clear picture of what's working well on our line and where improvements need to be made.

So if you'd like to tell us what you think about any aspect of our service, we'd love to hear from you. Contact London Overground's Customer Services Team:

- by telephone on 0845 601 4867
- by email at overgroundinfo@tfl.gov.uk
- by posting a letter to 125 Finchley Road, London NW3 6HY.



Website

tfl.gov.uk



24 hour travel information

0843 222 1234*

*You may pay no more than 5p per minute if calling from a BT landline. There may be a connection charge. Charges from mobiles or other landline providers may vary.